

# Spellbinders 2024 Advent

## Bonus Critters

The Crafty Advent Calendar contained several critter die sets. The Bee set from day 6 and the Frenchie Bulldog set from day 14 were used to create all of these bonus critters.

If you would like to work along, please pull out the pieces from these two sets. You will also need a white ink pad, a black ink pad, a white gel pen, a black gel or glaze pen, and a tiny blending tool for each ink color.

### Raccoon



#### Pieces Needed

1. Bulldog head, x2  
= head & body
2. Bulldog scarf  
= tail
3. Bulldog eye patch, x3  
2 black, 1 white  
= eyes & muzzle

4. Bulldog heart x2  
= ears
5. Bulldog outer ear, 1 set  
= front legs
6. Bulldog nose dropout  
= nose for muzzle

Align eye patch to score line of head die. Push eye patch closer to center, making sure eye hole in head

base stays covered. Adhere. Flip over second eye patch and repeat. Trim off sharp point of hearts using a rounding motion. Trim off bow from scarf using a rounding motion. Add shading details using inks & pens as pictured. Adhere pieces as pictured.

### Bear



#### Pieces Needed

1. Bee head  
= head
2. Bee body  
= body
3. Bee wings, 1 set  
= outer ear
4. Bee eye dropout, x5  
= 2 for eyes, 2 for inner

- ears, 1 for muzzle
5. Bee pupils
6. Bulldog nose dropout  
= nose for muzzle

Clip off bee antennae from head and stinger from body. Take bee wings. Clip off widest part just enough

to create ears. Glue on eye dropout pieces to create inner ear. Glue behind head. Add eye whites to head. Add pupils. Glue nose dropout to muzzle. Adhere over bee smile. Glue body to head attaching the score line behind bear head.

### Cat



#### Pieces Needed

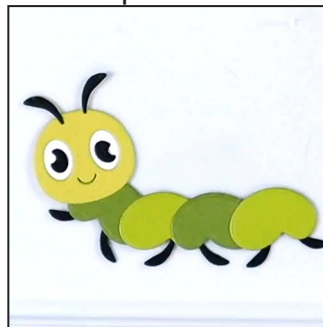
1. Bee head  
= head
2. Bee body  
= body
3. Bee eye dropout, x2  
= inner eyes
4. Bee pupils

5. Bulldog shirt stripes, 2 sets = whiskers
6. Bulldog scarf  
= tail
7. Bulldog nose dropout  
= nose
8. Bulldog heart, x2  
= ears

Clip off bee antennae from head and stinger from body. Trim off bow from scarf using a rounding motion. Attach as tail behind body.

Glue body to head rotating the score line to be the cat's rump. Color all pieces, including ears and legs, as desired. Turn hearts upside down and glue on as ears. Add eye whites. Add pupils. Glue nose just above mouth. Attach one leg to front and one leg behind body. Add whiskers to cheeks, keeping pieces close at cheeks and fanning out towards outside. Clip shorter.

### Catterpillar



#### Pieces Needed

1. Bee head  
= head
2. Bee wings, 2 sets  
= body
3. Bee eye dropout, x2  
= inner eyes
4. Bee pupils = pupils
5. Bee antenna = antenna

6. Partial bee head with the antenna as one whole piece. x3  
= leg sets

Adhere bee wings together sideways to create body. Shape as desired. Attach bee head to one end. Add eye

whites, pupils and antenna. Using the partial bee heads, turn them upside down to work as legs. Add glue to sliver of "head" and add behind caterpillar segments. as pictured.

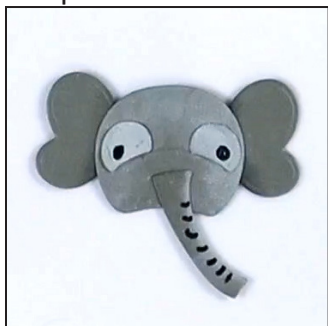


Full [video tutorial](#) available.

Elephant



## Elephant



### Pieces Needed

1. Bulldog head  
=head
2. Bulldog scarf  
=trunk
3. Bulldog eye patch x2  
= eyes
4. Bee wings, 1 set  
= ears

Shade pieces as desired with white and black ink. I lighten the eye patches and darkened the inner ear area. Add wrinkle lines to trunk. Glue scraps of white paper behind eye holes. Glue eye patches to match eye holes;

one patch will need to be flipper over to make this work. Glue trunk to front of face. Glue ears behind head. I kept the dip in the ear even with the pupils. Add gel or glaze pen to eye pupils.